



Regreening Africa

Reversing land degradation in Africa by scaling-up evergreen agriculture



KENYA

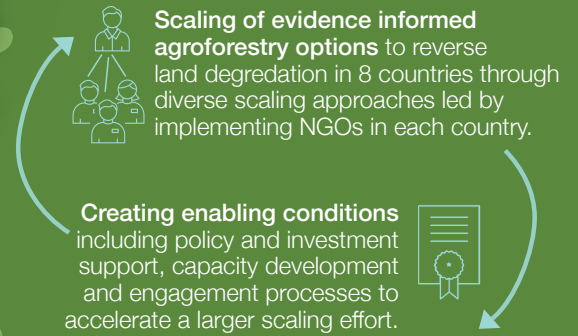


Funded by the European Union

Regreening Africa with Trees is an ambitious five-year program that seeks to **reverse land degradation among 500,000 households**, and **across one million hectares in eight countries in sub-Saharan Africa**.

This program supports the Government of Kenya's commitment to **restore 5.1 million hectares of land** as part of the Bonn Challenge and the Africa Forest Landscape Initiative (AFR100), and **10% tree cover** as outlined in the Constitution.

Regreening Africa project approach



Six steps to successful regreening

- Identify and analyze regreening successes in drylands
- Build a grassroots movement
- Creating enabling policies and legal conditions for regreening
- Develop and implement a communication strategy
- Develop and strengthen agroforestry value chains
- Expand research to fill knowledge gaps

(Adapted from Reij and Winterbottom 2015)



We hope the regreening Africa with trees project will address some of the key drivers of land degradation and especially work as a catalyzer to create enabling policy conditions for improved ecosystems service provision and improve human wellbeing. Land is a finite resource that often supports all territorial ecosystem services. However this land is threatened by deforestation, soil degradation and climate change. This affects the quality and quantity of the ecosystem services it can provide and therefore influences human wellbeing.



- MYRA BERNARDI
EUROPEAN DELEGATION TO KENYA

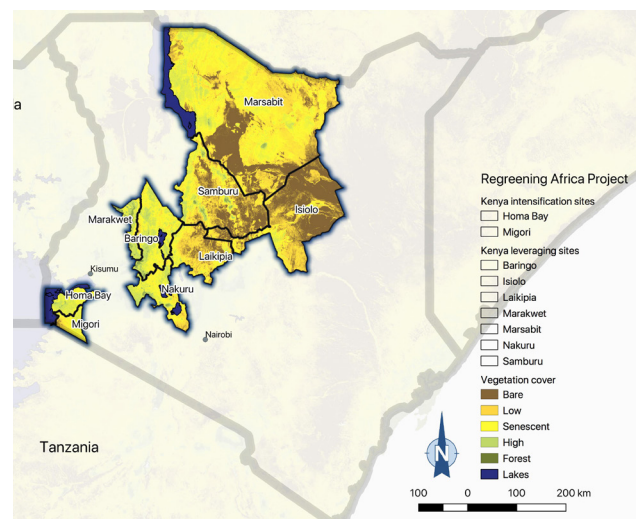
Regreening Africa - Kenya Focus

Regreening Africa with trees in Kenya aims to **reverse land degradation through trees on 150,000 hectares of land** and contribute to **food security for some 50,000 households** by 2022.

The program will **support mind-set change** and incentives for practicing evergreen agriculture, enhancing farmer access to quality tree seedlings, and strengthening farmer access to markets information services and profitable market participation around tree-based value chains.

In Kenya, broader partnerships, local capacity development, evidence-based decision-making and enabling policy processes will be highlighted. Implementation, led by World Vision Kenya with technical support from ICRAF, will reach households through:

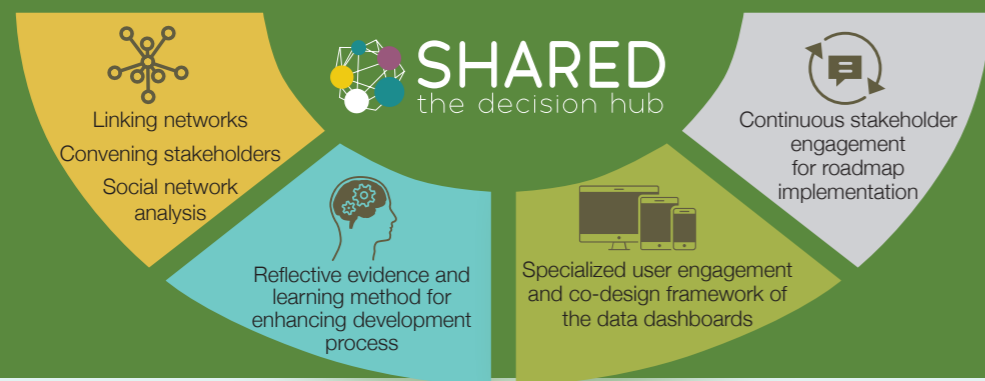
- Lead farmers as community change agents
- School environmental clubs, churches and community groups
- Model sites and exchange learning events
- Tree based value chains



Regreening Africa Project Sites in Kenya



Structured stakeholder engagement processes in the regreening project are designed and implemented by the ICRAF SHARED Decision Hub. The four key project roles of the SHARED Decision Hub include:



Phase 1. Context

A multi-stakeholder workshop using the SHARED methodology for evidence-based decision-making was held in October 2018 to bring together stakeholders working on regreening Kenya.

This workshop brought together national and county government officials, donors, IGOs, NGOs, grassroots organizations and the private sector to:

- review the evidence and benefits associated with integrating trees into agricultural and pastoral landscapes;
- identify opportunities that can be realized through taking agroforestry practices to scale and establishing enabling policy processes; and
- collectively develop a road map for scaling up.

Phase 2. Integrating Evidence

Stakeholders reviewed posters of agroforestry scaling techniques and efforts, including successes and challenges, land health and how households have benefitted.



Key terms

Agroforestry Land-use systems and practices in which woody perennials are deliberately integrated with crops and/or animals on the same land management unit

Evergreen agriculture A form of more intensive farming that integrates trees with annual crops or pasture, maintaining a green cover on the land throughout the year

FMNR (Farmer Managed Natural Regeneration) Systematic regeneration and sustainable management of trees and shrubs from living tree stumps, roots and seeds

Phase 3. Prioritize Implementation

A roadmap to support scaling up regreening practices in Kenya

2019

- Task force establishment** for coordination
- Stakeholder mapping and analysis**
- Stakeholder mobilization and establishment** of the taskforce
- Develop calendar of activities** based on key areas of intervention and determine budgets
- Lobbying and advocacy** by all implementing agencies, including education and awareness raising
- Organise and hold learning exposure events**
- Enhance capacity**, training of trainers
- Prioritise regreening interventions**
- Document and scale up best practices** by context
- All activities implementing partners**, including government and ICRAF

- Stakeholder mapping around data** completed by WW, PELUM, ICRAF, CI, ViAF and others
- Needs assessment** for capacity building conducted by ICRAF SHARED Hub
- Data sharing policies reviewed** by each institution, donors and government
- Inventory** of indicators, methods and tools by CI and ViAF

- Stakeholder identification** including MOE, MOA, MOIC
- Engagement of respective communities** such as civil society, government agencies and private sector
- Policy analysis and literature review** by ICRAF, research institutions/academia, MOE, MOA, KIPPRA, private sector (KEPSA), MODP

- Provide evidence on regreening successes**, KFS to lead with research institutions (KALRO, CGIAR Consortia, KEFRI), universities, related ministries, development partners, UN, FAO

2020

- Information sharing and effective communication** including summary reports and knowledge sharing forums
- Develop policy briefs** by researchers
- Domestication of research information** to make it farmer friendly
- Resource mobilisation strategy**
- MOU and Agreement**, M&E structure, quality management system
- Task force budget** development
- Advocacy for budget allocation** (resource mobilisation)
- Capacity needs assessment**

- Data provision and collection** by everyone, including all NGOs
- Monitoring of the indicators** by everyone with lead from WW and ICRAF
- Capacity building** on methods and use of tools by ICRAF
- Assessment of trees on farm** at national level by ICRAF, COG, ministries etc

- Agroforestry strategy formulation** led by MOE and MOA
- Validation of strategy** by government ministries and key stakeholders
- Official launch of the strategy** by key stakeholders

2021

- Implementation of activities**
- Mainstreaming of agroforestry**
- Enhanced capacity** through curriculum development and review

- Resource mobilisation** by national treasury, private sector and donors
- Agroforestry strategy implementation** by all stakeholders

- Joint resource mobilisation** by all stakeholders

- Institutional Framework** in collaboration with JASCCM, COG, non-state actors and line ministries

2022

- Task force exit strategy**
- Task force self-evaluation and audit**

- Co-design of platform** led by ICRAF SHARED Hub
- Knowledge sharing platform** on regreening co-developed by ICRAF, MOA and other stakeholders

Key areas of support by the Regreening Africa project are:

- capacity development in regreening practices,
- technical support in the development of the Agroforestry Strategy, and
- development of a decision dashboard to support in evidence sharing.

Key:

- Implementation and Capacity Development
- Information, Evidence and Knowledge Management
- Decision-making and Policy
- Enhancing Investments for Scaling

Acronym glossary:

CI	Conservation International	KFS	Kenya Forest Service
COG	Council of Governors	MOA	Ministry of Agriculture, Livestock, Fisheries and Irrigation
FAO	Food and Agriculture Organization of the United Nations	MOE	Ministry of Environment and Forestry
ICRAF	World Agroforestry Centre	MOIC	Ministry of Interior and Coordination
IGO	intergovernmental organization	MODP	Ministry of Devolution and Planning
JASCCM	joint agricultural sector consultation and cooperation mechanism	NGO	non-profit organization independent of government
KALRO	Kenya Agricultural and Livestock Research Organization	PELUM	Participatory Ecological Land Use Management Association
KEFRI	Kenya Forestry Research Institute	UN	United Nations
KEPSA	Kenya Private Sector Alliance	ViAF	Vi Agroforestry
KIPPRA	Kenya Institute for Public Policy Research and Analysis	WW	World Vision



Individual stakeholder commitments to support regreening in Kenya

County related commitments

- 1) Rehabilitation of degraded water catchment and riparian ecosystem; 2) Establishment of community commercial high value multi-purpose trees nurseries; iii) initiate formulation of county forest management policy.
- Work closely with county government on the area of woodland management plans
- Make Makeni County Green & Food Secure by involving all stakeholders and the agriculture-water departments by 2025 as outlined in the county's vision 2025.
- Ensure integration of agroforestry into the activities of the association in collaboration with the county government of Isiolo and others
- Rehabilitation of 1000 Ha of degraded county forests by 2022
- Support the policy analyses that identifies all soil and water adoption and scaling up AF but also the opportunities



Agroforestry Strategy

- Spearhead formulation of AF strategy and attainment of 10% cover in crop and rangelands
- Support the development of a national alliance of NGOs connected with the government that facilitates restoration target achievement

Evidence, Research, Monitoring

- 1) participate in activities that lead to regreening Kenya; 2) focus on research on invasive plant species in Laikipia and Nakuru counties; 3) Currently undertaking a feasibility study on irrigation in Baringo and Samburu; 4) documentation of belowground and above ground biodiversity in Marago; 5) Capacity building for communities on sustainable land management practices
- Provide evidence on the costs and benefits of SLM practices in rangelands of Kenya
- Assessment of baseline condition and analytical inputs for both targeting of interventions and monitoring of their performance
- Aid in quality data analysis, visualization and platform development

Implementation, Networking, Capacity

- Development of Forest Landscape Restoration proposal for Global Landscapes Forum
- Awareness creation, capacity building on restoration; mainstreaming of restoration work on project; nurseries in every community project; tree planting – National Drought Management Authority 2000 (fruits), 5000 other trees
- Build capacity of Wildlife Clubs of Kenya targets to plant 10,000 agroforestry trees by 2020
- Mobilize the 55 members of Pelum Kenya to participate in the Initiative; share best practices from the success cases
- Coordinate and evaluate the implementation and capacity development in 9 Counties to plant 48,000,000 *Gliricidia sepium*
- Work with stakeholders and communities in Isiolo, Baringo, W. Pokot, Samburu, Turkana, Marsabit, Wajir to guarantee sustainability of every project for commercial plantations of trees of interests (*Acacia Senegal*) in arid lands by ensuring purchase of the entire harvest collected by farmer
- Strengthen capacities of 18 producer organizations in 5 counties to scale up climate resilient landscape restoration
- Train 1000 farmers on how to grow *Faidherbia albida* tree by 2023
- Grow 300 trees per year for the next 5 years in my farm
- Farmer sensitization/training and recruitment to commercial control papaya farming for specific market; mobilization of county agriculturalists and agronomist for TOT training on best practices on papaya farming

Land degradation costs the world around 300 billion USD annually.
(Nkonya et al, 2016 – ELD)

References:

- Nkonya E. et al. (2016) *Global Cost of Land Degradation*. In: Nkonya E., Mirzabaev A., von Braun J. (eds) *Economics of Land Degradation and Improvement – A Global Assessment for Sustainable Development*. Springer, Cham
- Reij C and Winterbottom R. 2015. *Scaling up Regreening: Six Steps to Success. A Practical Approach to Forest and Landscape Restoration*. World Resources Institute.



Reversing land degradation in Africa by scaling-up evergreen agriculture

www.regreeningafrica.com

regreeningafrica@cgiar.org

[f](#) Regreening Africa

[#RegreeningAfrica](#)

www.worldagroforestry.org/shared